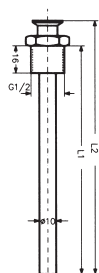


ZT

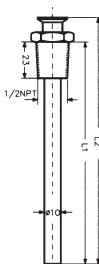
Immersion wells

for thermostats and temperature transmitters

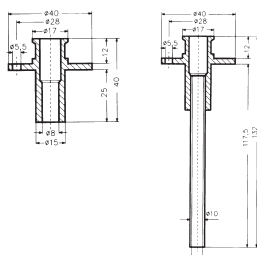
Type	Immersion depth L ₁ (mm)	Overall length L ₂ (mm)	Suitable for
------	--	---------------------------------------	--------------



immersion wells G1/2"

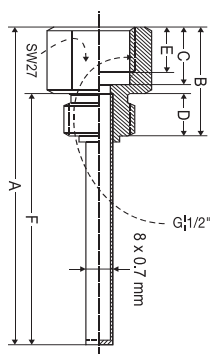


immersion wells NPT1/2"



R6

R7



G12

Nickel-plated brass, G 1/2", permitted pressure 25 bar

R1/Ms	135	151	TAM...
R2/Ms	220	236	
R10/Ms	135	151	TX...
R20/Ms	220	236	

Stainless steel (1.4404 + 1.4401) G 1/2", permitted pressure 63 bar

R1/Nst	135	151	TAM...
R2/Nst	220	236	
R10/Nst	135	151	TX...
R20/Nst	220	236	

Nickel-plated brass, 1/2" NPT, permitted pressure 25 bar

RN1/Ms	135	151	TAM...
RN2/Ms	220	236	
RN10/Ms	135	151	TX...
RN20/Ms	220	236	

Stainless steel (1.4404 + 1.4401) 1/2" NPT, permitted pressure 63 bar

RN1/Nst	135	151	TAM...
RN2/Nst	220	236	
RN10/Nst	135	151	TX...
RN20/Nst	220	236	

Immersion wells with fixing flange for air ducts

Type	Immersion depth of sensor	Suitable for
------	------------------------------	--------------

Material: chromated steel

R6	135 mm	TX...
R7	220 mm	

Immersion wells (screw-in thread G1/2"), stainless steel 1.4571

Type	Immersion depth (mm)	Connection	Max. perm. press. (bar)
------	-------------------------	------------	-------------------------

G12-100	100	G1/2"	40
R10/Nst	135	G1/2"	40